

## Activities Coming Up at Sammamish Hills

8/4-8/7: Summer Camp at Shoshone

8/28: Church Picnic

9/11: Rally Sunday- First day of Sunday School  
Family Pizza & Bingo Night

## Scenes from Vacation Bible School 2011




娱乐阳光野宴  
**Fun In The Sun!**  
**PICNIC**

SHLC & Grace Chinese  
Annual Picnic  
Sunday, August 28th  
(see back page for details)



### The new worship hymnals have arrived!

The new hymnals are a wonderful gift to the church in memory of long-time SHLC member Margaret Thompson. Help us honor Margaret's memory by enjoying this new worship tool and treating them with care so that they can be enjoyed by all for years to come.

- 2 Pr. Will: Co-Workers in the Kingdom
- 3 Rev. Ken: Transitions
- 4 Worship in August
- 4 Prayer Ministry
- 5 Global Missions: Eben Ezer Secondary School
- 6 Thought You'd Like to Know: The Altar and the Pulpit
- 7 Student Ministries
- 8 Children's Ministries
- 9 Preschool News
- 10 Financial Update Chart
- 11 Who Do I Contact?
- 12 SHLC & Grace Chinese Picnic Announcement: August 28

BELONG, BELIEVE, BECOME...

Sammamish Hills Lutheran Church  
 22818 SE 8th St.  
 Sammamish, WA 98074  
 Telephone: 425.392.7799 | Fax: 425.392.7897  
 www.shlc.org

Office hours: Monday-Friday 8:30 a.m. - 4 p.m.

The Sammamish Hills Lutheran Church newsletter is published monthly © 2011. All rights reserved. Submissions for the newsletter are accepted until the 10th of the month prior to publication. Submissions are subject to approval and editing.

## Co-Workers in the Kingdom

By Pr. Will Sappington



*For when one says, "I follow Paul," and another, "I follow Apollos," are you not mere human beings? What, after all, is Apollos? And what is Paul? Only servants, through whom you came to believe—as the Lord has assigned to each his task. I planted the seed, Apollos watered it, but God has been making it grow. So neither the one who plants nor the one who waters is anything, but only God, who makes things grow. The one who plants and the one who waters have one purpose, and they will each be rewarded according to their own labor.*

*For we are co-workers in God's service; you are God's field, God's building.*

*1 Corinthians 3:4-9*

*Serving at Sammamish Hills has been an incredible joy to me. You welcomed Kaia and me into this community with open arms and we are deeply grateful. Words cannot adequately express our thanks and the feelings we have as we look to where God is calling us next.*

*You trusted me to baptize your children, preside at your weddings and funerals, lead classes, visit you when you were sick, and share in meals. For that trust I'm honored.*

*In this time I think the 1 Corinthians passage is important. Paul gives us all a needed reality check. There is nothing special about me. I am a child of God who accepted a call to a place that was already doing great ministry. I just helped for a while. I have been your co-worker in the kingdom for this time. Truth be told, you've done most of the work. I've been a cheerleader and a prayer partner. You've been the hands and feet of Christ.*

*We all serve the same King. We all have the same heavenly Father. We are all God's children. I promise to remember you in prayer and I ask that when you think of my family you lift us up as well.*

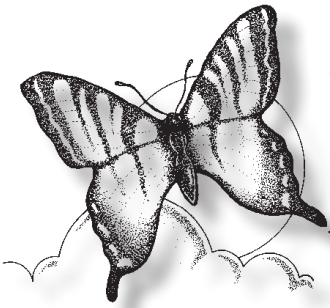
*Paul says it best when he says, "For we are co-workers in God's service; you are God's field, God's building."*

*Grace and Peace to you,  
 Pr. Will*

*P.S. I thought I was done writing this article until our office administrator, Kim, told me that I had not actually said, "goodbye." I will do one better than "goodbye." To the wonderful community at Sammamish Hills I will say, "The Lord bless you and keep you. The Lord's face shine upon you with grace and mercy. The Lord give you peace. Amen."*

# Transitions

by Rev. Ken Carrothers



About ten years ago I was going through a difficult time that challenged me in such a way that I lost the ability to imagine my future. In many ways I grew complacent and just went through the daily motions of living. It was a not a good place to be.

Knowing my struggle, a good friend shared something with me. She told me that when a caterpillar enters a cocoon it does not know that it will come out a beautiful butterfly. All it knows is that it is dark; it is alone; it is a little scary.

Over these past few weeks, I have been thinking a lot about what my friend told me. With Pastor Will announcing he has accepted another call at Peace Lutheran in Billings, Montana, Sammamish Hills Lutheran enters into a time of transition. I believe there are will likely be a whole host of feelings that will come up during this transition, ranging from sadness at the hole that will be left with Pastor Will's leaving, to joy as we recognize the blessing the Sappington family will be to another faith community. And while there will be a range of emotion, it seems to me this transition can feel much the same as the cocoon to the caterpillar. It can seem as though it is a dark time in the church as we lose Pastor Will's gifts. It is understandable that people might experience feelings of loneliness as a trusted friend and mentor leaves. It might even feel a little scary to consider a future without the presence of Will's leadership. All of these feelings are understandable and are perfectly legitimate.

But just as the empty tomb is only the beginning of the Easter resurrection story... just as the cocoon is simply a precursor before the butterfly... out of this transition we can trust that God has something in store for his people of Sammamish Hills Lutheran Church. For just as we confess, our God brings life from death... our God encounters his people in the joys and sorrows of life... our God leads his people out of slavery and into the promised land... Our God is alive and moving in our midst... And our God is waiting to meet us as we venture out into our future.

So let us take the time to say goodbye and honor the gift God has given us through the time we have shared with Will, Kaia, Evangeline, Zevon and Guthrie. As we do may we lean on the promise that just as surely as God is leading the Sappington's to Peace Lutheran, so too God is leading Sammamish Hills into a glorious future.

*Pr. John is on sabbatical this summer and will be out of the office from June 1 until September 1. Please keep John, Cheri, and their daughters in your prayers as they travel in Europe and Canada.*



## LOOKING FOR A SWEET VOLUNTEER

**OPPORTUNITY?** We are looking for a volunteer, or volunteers, to help with cleaning up the Cookie Cart table after the 10:30 a.m. worship service. An important part of our Sunday morning worship, the Cookie Cart ministry is a great opportunity to



volunteer as a family and participate in making every week's worship a bit sweeter. Please contact Beth Woodward at [sblwoodward@comcast.net](mailto:sblwoodward@comcast.net) with any questions or to volunteer.

There is a sense of rush to the month of August. Kids are trying to have as much fun as possible before heading back to school. Parents are trying to get their kids ready to go back. Teachers are frantically preparing. In the church we gear up for a new year.

The text for the first Sunday in August tells a different story and should set the tone for the month. Elijah has to be still and listen intently to hear God's voice. Jesus tells his disciples to not be afraid. Put the worry and the fear away and take this month to listen. You'll be amazed at what you hear.



Sunday, August 7: Eighth Sunday after Pentecost *Love Is Stronger Than Fear* (Readings: 1 Kings 19:9-18; Romans 10:5-15; **Matthew 14:22-33**)

Jesus calls us to step out in faith. Jesus promises to be with us every step of the way. So, why are we so fearful? When has trusting in God failed us?

Sunday, August 14: Ninth Sunday after Pentecost *Prayers with Hands and Feet*

(Readings: Isaiah 56:1, 6-8; Psalm 67; **Matthew 15:10-28**) Do your prayers stop when you say, "Amen?"

Or do you live out your prayers as a follower of Christ. Jesus responds to a woman's desperate plea. We too have a role to play in being answers to prayer.

Sunday, August 21: Tenth Sunday after Pentecost *Foundational*

(Readings: Isaiah 51:1-6, Romans 12:1-8, **Matthew 16:13-20**)

What is the church built on? I can tell you it is not built on concrete and metal. The church is built on you and me and all the saints that have gone before us. The church is alive. How does it feel to be foundational?

Sunday, August 28: Eleventh Sunday after Pentecost *Who Are You Following?*

(Readings: Psalm 26:1-8; Romans 12:9-21; **Matthew 16:21-28**) We mean well, we really do. We are like Peter and we think we know the heart of God better than God does. Instead of listening and following, we run off in our own direction. Which path is the better one to follow?

## Prayer Ministry Reflection Corner

"Seek first His kingdom and His righteousness, and all these things will be given to you as well." Matthew 6:33

As summer comes to a close, we are starting to gear up for fall and fall's activities. Classes will be starting and we will be sending our kids off to school. For some it is a season of change as our high school graduates fly the coop and branch out on their own, and parents can feel a very real sense of loss as their children move on with their lives and leave their childhood behind.

But this can also be a good time to take stock of your spiritual life— maybe there is a Bible Study that you have always wanted to attend but didn't have time for previously; perhaps there is a ministry at Church that you could bring your ideas and expertise to. There are many opportunities here at SHLC and all are welcome to participate. We encourage you to be in

prayerful consideration so that you can discern what God's priorities are for your life. Where does He want you to serve?

"Stand at the crossroads and look; ask for the ancient paths, ask where the good way is, and walk in it, and you will find rest for your souls."

-Jeremiah 6:16

- Have you had an answer to prayer? Please contact Debbie or Barb so we can tell others about it through this newsletter column.
- Prayer Chain: Are you receiving the prayer request emails? If not, please check your Spam folder as they can sometimes end up there. If you have changed your email address, contact Kim in the church office to have the correct address added to the mailing list.



# GLOBAL MISSIONS

## Eben Ezer Secondary School: Looking Back, Looking Ahead

It was just three years ago that nine members of Sammamish Hills traveled to Tanzania in search of long-term global missions opportunities. We found the opportunity in Morogoro, where the Evangelical Lutheran Church Morogoro Diocese captivated us with their passion for building a Christian-based, science-focused secondary school.

Returning home, our church leaders committed to support the school, named Eben Ezer Lutheran Junior Seminary. Since that time, you have shared your prayers, donated funds to roof a classroom, buy bricks, and contributed money for

books. Your support has been felt half a world away.

In Morogoro, the progress is evident. The frame of the laboratory building stands where Linda Saddler and Peg Carver saw day workers hand-digging its foundation during their visit to the school last September. It now awaits roofing, which should begin soon.

What's next? Student and teacher quarters, a dining room, and a library will complete the school, but Diocese Bishop Jacob Mameo says he aims to begin classes there as soon as the bare essentials are available.

Take a look at the school you're helping to build through these photos from 2008 through today and thank you for your support!



August 2008: The team from SHLC visits the vacant site of Eben Ezer school.



September 2009: The shell of the first classroom is complete and the foundation is poured for another.



September 2010: Workers begin hand-digging the foundation for the laboratory building.



September 2010: Two classrooms stand completed.

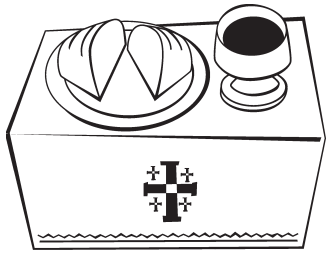


June 2011: The laboratory building is ready for its roof.

# THOUGHT YOU'D LIKE TO KNOW

by Gwen Gilbertson

## The Altar and the Pulpit



Altars in Old Testament times were many and varied. Their importance is seen that the "altar" is used 433 times in one version of the Bible. Some of the early ones were crude and the shape and size varied depending on the building materials

The first HEBREW ALTAR WAS THE ONE ERECTED by Noah after leaving the ark. Altars were also built by Abraham, Isaac, Jacob and Joshua. Most of the altars were built for sacrificial purposes but others seem to have been a memorial. Sometimes God stated how the altar was to be built and of what material.

With the erection of the tabernacle (the portable sanctuary that served as a place of worship for the Israelites traveling in the wilderness until the building of the temple by Solomon) altars built were constructed by the Hebrews for two

chief purposes: the offering of sacrifices and burning of incense. The altar of sacrifice being the first thing visible as one approached the tabernacle spoke loudly to man that without the shedding of blood there would be no access to God and no forgiveness of sin (Hebrews 5:1 and 9:9).

There is good reason to feel that the need for



altars was revealed to man very early as basic in approaching God. It played a leading role in Old Testament worship of the true God and a part in most heathen religions. There are no altars recognized in the New Testament Church. The idea is that Jesus Christ is the true altar of each believer. The altar reminds us of the great sacrifice that the Son of God made on the cross.

We hear the term "chancel" and we ask questions. The chancel is the area of the sanctuary (worship area) where clergy officiate and the altar is placed. The altar is

the focal point. Through the centuries the altar has come to symbolize God's presence and his sacrifice for us. It is from the altar that we receive the Lord's Supper and to the altar we bring our gifts of love and devotion. The altar is commonly called the gathering place for the "communion of saints". The altar is therefore the symbolic center of the Church's life.

Just as the altar is the place of Holy Communion, the pulpit is the place



of the proclamation of the word. The pulpit symbolizes the importance of the preaching of the word. Although the pulpit is the place of most preaching today, it has not always been so. In the early Church preaching was done in the midst of the gathered people (the congregation) and

today often the gospel text is read from the center of the aisle.

Remembering the central focus of the altar and the pulpit, may it have new and added meaning to you each time you enter your Church.

## Altar Team Members Needed

Altar Team members are urgently needed for the 10:30 a.m. worship service. Training is provided. We are looking for multiple team members to serve on this wonderful ministry team. Members serve on a rotational basis. Please contact Marlene Knie ([m.knie@comcast.net](mailto:m.knie@comcast.net) or 425.868.1289).

# STUDENT MINISTRIES

by Kaitlin Barbosa

**WEDNESDAY SUMMER GATHERINGS:** Summer gatherings continue into August! All middle school students (entering 6th-8th grade in the fall) are invited from 7-8:30 p.m. on Wednesday evenings through August 10. We have already had a fun July with water balloon volleyball and more fun games. Join us!



## TIME TO START THINKING ABOUT FALL CONFIRMATION:

*Confirmation is a three-year partnership between parents, Confirmation students and the congregation to fulfill the vows made in Holy Baptism, while preparing students for the challenges and responsibilities of a mature faith in Jesus Christ. Confirmation begins in 6th grade and continues into the fall of the freshman year. Below are important dates as we plan for the fall. Please plan on attending **ONE** of the two parent meetings:*

- **Sunday, Aug. 21, 11:45 a.m.-12:15 p.m.** in the Sanctuary - Incoming 6th Grade Parent Information Session
- **Wednesday, Sept. 21, 7:30-8:30 p.m.** in the Fellowship Hall - Parent Meeting
- **Sunday, Sept. 28, 11:45-12:45 p.m.** in the Fellowship Hall - Parent Meeting
- **Saturday, Oct. 1, 8:30-9:30 a.m.** at Pr. John's home - First Guide Huddle
- **Saturday, Oct. 5, 7:00-8:30 p.m.** in the Fellowship Hall - First night of Confirmation for students AND parents

If you have any questions, please contact Kaitlin Barbosa ([kaitlin@shlc.org](mailto:kaitlin@shlc.org)). Registration packets will be mailed to incoming 6th graders at the end of August. 7th & 8th graders can download them from the church website or pick one up in the church office.



## HIGH SCHOOL MINISTRY

**SUMMER YOUTH GROUP:** Come join other high school students from 7-9 p.m. every Sunday night in the Fellowship Hall and beyond this summer. Come to meet others, take time in devotions, have some laughs, and play games. Please check the church website, youth Facebook page, your email, or ask Kaitlin for our meeting locations throughout the summer! Any questions, please contact Kaitlin ([kaitlin@shlc.org](mailto:kaitlin@shlc.org)).



**GUATEMALA MISSION TRIP 2012:** The team is forming for a mission trip next summer. All students will be entering 9th grade this fall through college are invited to serve in Guatemala with The God's Child Project. To get more information, sign up on the narthex bulletin board

or contact Kaitlin. Right now we are selling Brown Bear Car Wash tickets for \$5 each. Find our table in the narthex or contact Kaitlin to purchase tickets.

## ALL AGES

## IMPORTANT DATES

- **August 4-7:** Shoshone Base Camp
- **October 30:** Rite of Confirmation
- **November 4-6:** Youth Ministry Fall Retreat

# CHILDREN'S MINISTRY

by Karen Harmon



## SUMMER SUNDAY SCHOOL SCHEDULE:

This summer we will hold Sunday School during the 9 a.m. worship service only.

8/7: Signs of the Times

8/14: The Kingdom of Heaven

8/21: Kids worship with their family, no Sunday School

8/28: Kids worship with their family: Church picnic, no Sunday School

9/4: Kids worship with their family, no Sunday School

9/11: First day of Sunday School & Parent Meeting. Pizza & Bingo in the evening!



## VACATION BIBLE SCHOOL: ROAD TO LIFE!

We had a fantastic week of VBS, July 11-15! We traveled on the "Road to Life" learning about Palm Sunday, the Last Supper, Good Friday, Easter, and the Great Commission. The kids had fun acting out the Bible stories, singing, making crafts, playing games, learning about prayer, and working on special outreach projects both for our community and the children in Guatemala. Thank you to all the amazing volunteers who shared their gifts and made it an amazing week.

## SAMMAMISH HILLS OPEN PLAY! (formerly Toddler Time):

Join us for Open Play every Tuesday from 9:30-11:30 a.m. in the Fellowship Hall. This program is for children ages 0-5 years-of-age with a parent or caregiver. We have fun toys, good fellowship and exciting special events. In the summer, on sunny days, we get to be outside on the preschool playground!

Tell your friends and neighbors. This program is for everyone! \$1 donation per child is suggested.

## WORSHIP BAG MINISTRY:

In the narthex, we have a rack of worship bags ready for kids of all ages to enjoy during services. We rotate different toys, quiet books, Bible stories, puppets and more! If you are already a fan of these bags, keep on the lookout, there are some great new activities in there. If you would be interested in helping maintain these worship bags, please contact Karen Harmon (karen@shlc.org) We are looking for a few people to spend a few minutes organizing and restocking the bags on alternate weeks.

## THE FAITH 5: EVERY NIGHT IN EVERY HOME



1. Share...your highs & lows of the day



2. Read...a story/ scripture from the Bible



3. Talk...about the story



4. Pray...for each other and the world



5. Bless...each other with the sign of the cross on the forehead

# PRESCHOOL NEWS



Is it really August already? For many of us, this is the time of year to enjoy one last month of freedom– freedom from schedules, homework, deadlines and rain! But for others, this is the time of year when thoughts of the new school year creep into our heads as we start to get ready for the year ahead.

August is the month when our preschool staff and ministry team are busy gearing up for a wonderful new school year with vision and excitement that enables us to provide the best Christian preschool program that this church could hope to offer!

By the end of the month the ministry team will have met to organize and send out back to school packets to all preschool families and begin planning for a new year. Teachers will be back in the classrooms working and setting up their wonderful classrooms and we will all be excited to start a new school year!

Continue to spread the word about Sammamish Hills Lutheran Preschool. We still have space available in our T/Th Older 2's class, M/W 3's class and our T/Th 3's class. Families interested in SHLP should contact Kristine Meyer @ 425-698-5777 or [kristine@shlc.org](mailto:kristine@shlc.org)

School begins the second week of September. Please keep our preschool families and teachers in your prayers as we transition into our 2011-2012 school year.

## **Registering now for the 2011-2012 school year!**

We have openings in our T/Th Older 2's class, M/W 3's class and our T/Th 3's class.

Call Kristine Meyer for more information and to schedule a tour (425-698-5777; [kristine@shlc.org](mailto:kristine@shlc.org); [www.shlc.org](http://www.shlc.org))

Special Programs include: Weekly Chapel class, weekly music and movement class, and extended-day Lunch Bunch.

**ENROLL NOW AND GET \$100.00 OFF THE REGISTRATION FEE!**

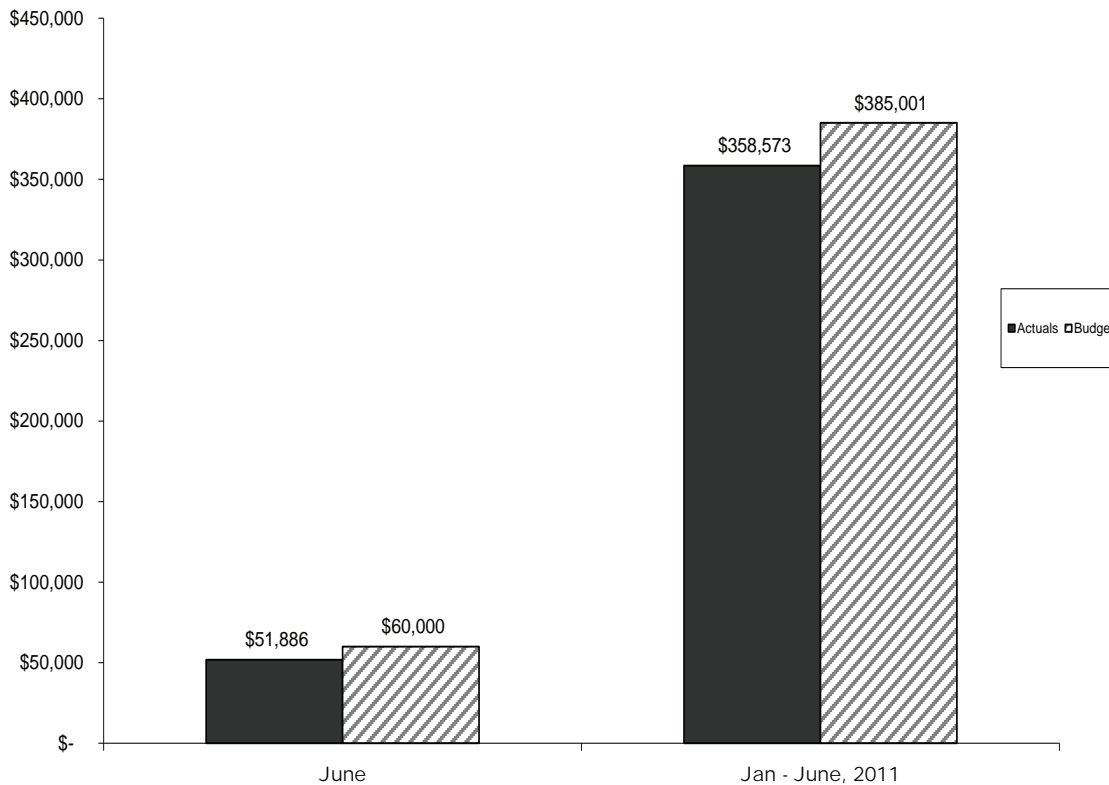
# FINANCIAL UPDATE



Don't  
Forget  
Your  
Pledge  
This Summer

**ONLINE GIVING OPTIONS:** Are you interested in automating your giving to the church? We currently offer two convenient options for giving to the church via your credit or debit card. To give online, please visit our website [www.shlc.org/giving.html](http://www.shlc.org/giving.html) and choose either "Online Giving" — great for one-time gifts—, or Simply Giving® to download the enrollment form to set up pre-authorized scheduled withdrawals from your bank account (Return completed forms to Alison Carpenter in the church office or place in the offering plate). Don't have Internet access? Forms are also available in the office. Questions? Please contact Alison Carpenter (425.392.7799 ext. 23 or [acarpenter@shlc.org](mailto:acarpenter@shlc.org)).

**Offerings  
Budget Vs Actuals**



# WHO DO I CONTACT?

## PASTORAL CARE:

Lead Pastor: John LaMunyon, [prjohn@shlc.org](mailto:prjohn@shlc.org) - ext. 13

Pastor of Worship and Outreach: Will Sappington, [prwill@shlc.org](mailto:prwill@shlc.org) - ext. 25

Mission Developer: Jimmy Hao, [jianhuahao@yahoo.com](mailto:jianhuahao@yahoo.com)

## FAITH FORMATION THROUGH THE AGES:

Nursery: Karen Harmon, [karen@shlc.org](mailto:karen@shlc.org) - ext. 15

Preschool: Kristine Meyer, [kristine@shlc.org](mailto:kristine@shlc.org) - 425.698.5777

Director of Children's Ministries: Karen Harmon, [karen@shlc.org](mailto:karen@shlc.org) - ext. 15

Confirmation: Kaitlin Barbosa, [kaitlin@shlc.org](mailto:kaitlin@shlc.org) - ext. 16

Director of Student Ministries: Kaitlin Barbosa, [kaitlin@shlc.org](mailto:kaitlin@shlc.org) - ext. 16

Adult Ministries: John LaMunyon, [prjohn@shlc.org](mailto:prjohn@shlc.org) - ext. 13

## MUSIC & WORSHIP MINISTRIES:

Pastor of Worship and Outreach: Pastor Will Sappington, [prwill@shlc.org](mailto:prwill@shlc.org) - ext. 25

Don Clausen: [clausend@comcast.net](mailto:clausend@comcast.net)

Organist: Carol Churchill, home phone: 425.881.6657

Organist: Susan Wolbrecht, home phone: 425.883.9259

Choir Accompanist: Jan Hazelton, home phone: 425.868.1851

## SUPPORT TEAM:

Business Administrator: Tom Ryan, [tryan@shlc.org](mailto:tryan@shlc.org)

Parish Records Specialist: Alison Carpenter, [acarpenter@shlc.org](mailto:acarpenter@shlc.org)

Administrative Assistant: Kim Rodriguez, [kim@shlc.org](mailto:kim@shlc.org) - ext. 11

Sexton: Brian Mar, [sexton@shlc.org](mailto:sexton@shlc.org)

## CHURCH COUNCIL:

President: Andy Tischaefter, [atisch@live.com](mailto:atisch@live.com) | 425.868.5590

Vice President: Doug Chadwick, [dgkychad@aol.com](mailto:dgkychad@aol.com) | 425.898.0605

Secretary: Cam Barsness, [rooney1023@hotmail.com](mailto:rooney1023@hotmail.com) | 206.330.1982

Treasurer: David Edson, [bedson8175@msn.com](mailto:bedson8175@msn.com) | 425.831.1366

## Members-at-Large:

Dean Barnett, [deanbarnett@comcast.net](mailto:deanbarnett@comcast.net) | 425.868.0233

Carla Berg, [carlaberg@comcast.net](mailto:carlaberg@comcast.net) | 425.391.8299

Elliott Hoole, [Elliott.hoole@comcast.net](mailto:Elliott.hoole@comcast.net) | 425.996.8634

Nancy MacPherson, [nancy@macphersonconstruction.com](mailto:nancy@macphersonconstruction.com) | 425.392.1383

David Miles, [david.victoria@comcast.net](mailto:david.victoria@comcast.net) | 425.427.0548

## WHERE TO GET INFORMATION:

Website: [www.shlc.org](http://www.shlc.org)

Follow Us on Facebook: [www.facebook.com/sammhills](http://www.facebook.com/sammhills)

Request Prayer: Send email to [worship@shlc.org](mailto:worship@shlc.org)

Join the Prayer Chain: Send email to [worship@shlc.org](mailto:worship@shlc.org)



Sammamish Hills Lutheran Church

22818 SE 8th Street  
Sammamish, WA 98074

Non-Profit  
US Postage  
PAID  
Permit #259  
Issaquah, WA

Return Service Requested

BELONG, BELIEVE, BECOME...



WORSHIP, FELLOWSHIP & FUN AT THE ANNUAL SHLC/GRACE  
CHINESE LUTHERAN WORSHIP SERVICE AND PICNIC— SUNDAY,  
AUGUST 28:

10:30 a.m. bilingual worship service

11:30 a.m. - 1 p.m. BBQ

Home of Roger & Nancy MacPherson on Pine Lake!  
21626 SE 28th Street, Sammamish (Maps are  
available in the church narthex)

Bring:

Last Name A – L please bring a salad or side dish to feed 8 – 10 including serving utensils

Last Name M – Z please bring a dessert to feed 8 – 10 including serving utensils

*AND Everyone needs to bring their own lawn chairs for yourself/your family*

SHLC will provide: hamburgers/hotdogs/chips and beverages and all napkins/  
plates/utensils

Parking information: Please carpool! Look for the signs and volunteers  
directing you to neighborhood parking. Drop-off area will be available.

RSVP!: Please see the sign-up sheets in the church narthex.

Questions? Please contact the Picnic Planning Team of Nancy or Roger  
MacPherson 425.392.1383, Terry or Kevin Ostendorf 425.392.3541 or Jeannine  
or Tom Ryan 425.837.0670 with questions.